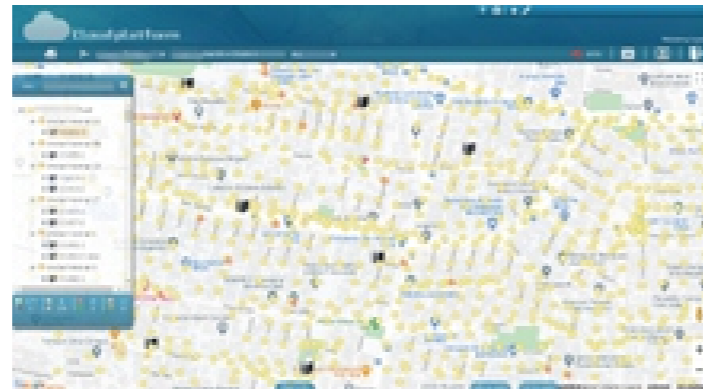






Intelligent Lighting Platform SEMS-SLCS-V3




The SEMS - SLCS-V3 platform is a professional B/S software special designed for the smart cities lighting field applications. Easy to control, easy to use, easy to install. This platform is a good way to make your project to success in cloud or server. It is a web based platform, users can be able to access it by a laptop or tablet device. It can be installed in Windows server or Linux server.



Functions

 Data Show the power consumption	 System alarm Show the alarm record and types	 Task Scheduling your lights	 Lighting Show the percentage of normal & fault light
 Monitoring on/off, dim, query, overview monitoring	 System Creat/delete projects, roles, users & authorise	 Log Record the actions done to platform	 Device Add/remove devices

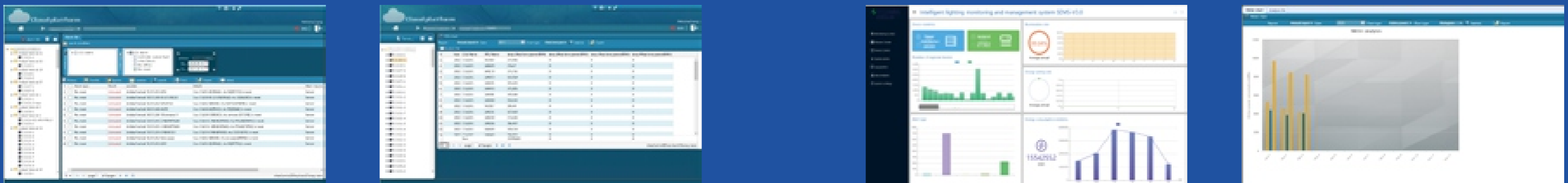
Advantages

 Open API Ready for future Open for bigger platform	 Safety solution No hosting, no back door, You own the platform & all data	 User friendly Pure background color Easy-understanding icon, Optimized interface & process	 Green platform Small package size One-click installation Install without plug-in
--	---	--	--

Benefits

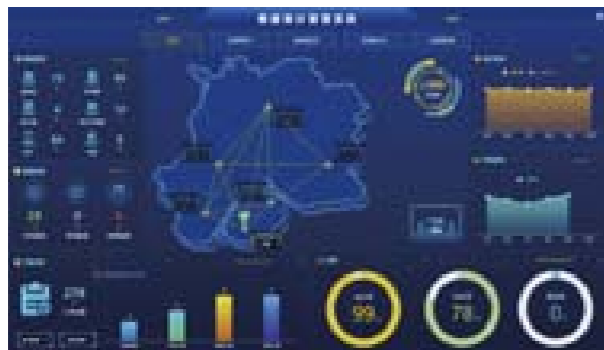
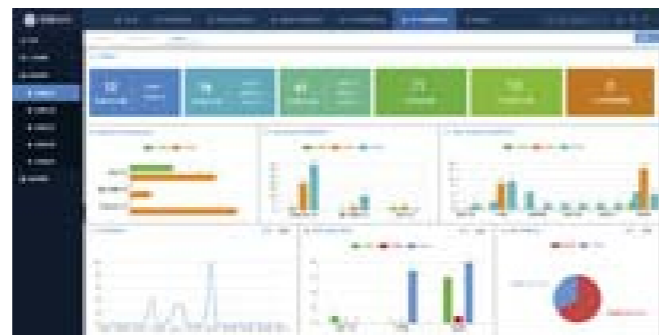
For Citizens <ul style="list-style-type: none"> · Safer on roads with adequate light. · Live better with less light pollution because of suitable lighting period and brightness. 	For Cities <ul style="list-style-type: none"> · Shows modern and high-tech image to the world. · Create a safe atmosphere and environment for the city.
For Governments <ul style="list-style-type: none"> · Reduce energy cost up to 60%. · Save cost on operation & maintenance up to 50%. · Minimize crime through adequate public light. 	For Lighting Operators <ul style="list-style-type: none"> · Precise & efficient light control on platform as per real demand. · On-time data and status checking. · Automated fault alarm notification. · Easy asset management by fully record & precise GPS positioning.

Platform interface

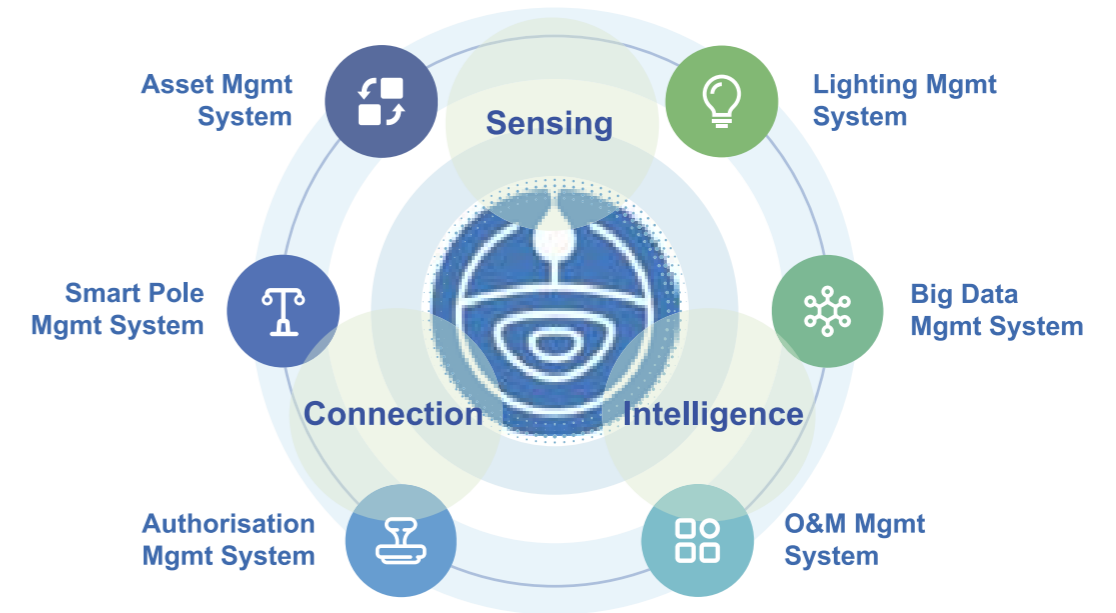


Intelligent Lighting IoT Platform HOTU

HOTU is a powerful Intelligent Lighting IoT Platform for smart pole project. Clients can enjoy one platform for whole process of control, management, operation and maintenance of lighting and all smart devices on pole.



Platform Structure



Advantages

<p>Modular Design</p> <p>Choose the applications as per demand</p>	<p>Multi-dimensional Big Data</p> <p>Facility big data Lighting big data O&M big data Smart pole big data</p>	<p>Flexible Configuration</p> <p>Work order process Management strategies</p>
<p>Configurable Base Map</p> <p>Google map Baidu map Other maps</p>	<p>Supports Multiple Terminals</p> <p>Video wall Computer/laptop Tablet, Mobile</p>	<p>Supports Capacity Expansion</p> <p>Expansion for more application Expansion for more devices</p>